




Residential & Commercial Collection  
**Cork Flooring**







Colorful and durable

◀ FRONT COVER

SAINT JOHN GREEK ORTHODOX CHURCH  
BASKETBALL COURT, LAS VEGAS, NV

Baltico Terracota with inlay  
of Baltico Charcoal and Mahogany

*Ekona Architects & Planners*

AVEDA SPA & SALON - DENVER, CO

Edipo in Moka, Chestnut, Cocoa, Leather Brown  
and Armagnac

*Bobby Hill designs LLC, HDA, Denver, CO.*



Cork Flooring  
**Residential & Commercial**  
Collection

**The only cork  
available in 54 colors**

Cork, the creative choice  
for floors and select wall areas  
in prestige residences and  
commercial buildings.

Nothing quite has the look or feel of cork,  
to impart a sense of sophistication, style  
and natural warmth in an abundance of colors.





## The many benefits of Cork

Environmentally friendly  
renewable resources

Harvested with minimal impact  
on the environment

Contributes to LEED 2.0 MR: Credit 6  
Rapidly Renewable Resources

Leed 2.0 EQ Credit 4.01  
Low emitting materials



### Ideal sustainable material

Every year the cork bark is peeled. It takes 9 to 14 years to completely grow back. Cork trees will live to well over 500 years. Moreover, no harmful chemicals are used in the processing or manufacturing of cork.

### Great durability

Our unique MP765 coating system water-base urethane results in a outstandingly durable surface that out-performs wood, linoleum and vinyl.

### Sheer Beauty

The six distinct patterns of the cork tree are of the most exquisite natural materials available.

### Vast choice

Our staining technology is such that we can create a finished cork floor in virtually any color imaginable.

### Endless design possibilities

Our cork tiles are easy to cut and can be crafted into all manner of designs and patterns.

### Natural cushioning

Our treated cork retains its natural buoyancy, making it exceptionally comfortable to walk on.

### Innate acoustic properties

This makes cork an inspired choice for libraries and public buildings where quietness is a sought-after quality.

### Humidity proof

Cork flooring from Duro-design is perfect for spas and similar applications because it is unaffected by humidity.

### Cleanliness

Cork is both anti-allergenic and anti-static.

### Low maintenance

Due to our special water-base urethane coating, our floors need only minimal maintenance.



Duro-design cork is a sustainable, natural material that creates beauty and offers limitless possibilities to forward-thinking architects and interior designers with a creative and innovative eye. Duro-design's advanced coating technology gives cork a highly resistant and long lasting protective shield delivering performance qualities equal or superior to hard-wood, necessary for high traffic environments.

## *Durability you can count on*

DURO-DESIGN CORK FLOORS  
ARE DURABLE FOR TWO MAIN REASONS :

1. The density of our cork is at least 500 kg / m<sup>3</sup>, which gives it exceptional indentation recovery from high heels and the weight of heavy objects.
2. Specially engineered for the resilience and buoyancy of cork, our four-coat, on-site MP765™ two-component, water-base urethane is the ultimate finishing system. It possesses all the attributes needed to give the cork flooring excellent durability including:
  - Super flexibility to follow the bouncing movement of the cork
  - Excellent abrasion and chemical resistance
  - Very sharp optical definition to give the cork a beautiful, natural and vibrant look.

The MP765™ water-base urethane is fast-drying and almost negligible of VOC contents. It has a viscosity of about 20 seconds ( Ford cup #4 ) and applies almost effortlessly, like washing a floor. What's more, it completely seals the joints, creating an impermeable floor.

It is also very easy to recoat. Just a light screening is necessary before refinishing the floor.





## 6 Residential Flooring







## RESIDENCE, SONOMA, CA

Baltico Natural with inlays  
of Mahogany and Sorbet White

Cork is both anti-allergenic and anti-static.  
Hence, there is probably no better choice  
than cork for the home. Our floors need  
only minimal maintenance.



## 8 Residential Flooring



RESIDENCE, LOUISVILLE, TN

Natural Barriga

*McCarty Holsaple McCarty, Architects*





ILLINOIS HOME, BURR RIDGE

Cleopatra Negra / Planks, Rioja



## 10 Residential Flooring



**PRIVATE RESIDENCE MASTER  
BEDROOM, BLUE ASH, OH**

**Baltico Bleach with Cherry border**

◀ **PRIVATE RESIDENCE, NY  
MANHATTAN APARTMENT**

**Baltico Praline**





PRIVATE RESIDENCE BALTIMORE, BALTIMORE, MD

Barriga in Panama Yellow, Red Terracotta, Primavera and Nacho Cheese









## BANK OF WAUSAU, WI

Baltico Natural and Red Maple

*C.A. Ghidorzi Design*

**Vast choice:** Our staining technology is such that we can create a finished cork floor in virtually any color imaginable. Cork, being textured, accepts staining much better than wood.





## 14 Commercial Flooring



**GRIFFITH PARK OBSERVATORY,  
LOS ANGELES, CA**

**Barriga in Sunny Yellow,  
Red Terracotta, Red Maple  
and Mahogany**

***Pfeiffer Associates, Architects***





Be unique... Do it with cork

15







**FRESSEN RESTAURANT, NEW YORK**

Baltico August Brown with Mondrian patterns of Edipo in Custom Green, Algerian Red and Coco

*Jed Johnson and Associates, Design*

Duro-design's advanced coating technology gives cork a highly resistant and long lasting protective shield delivering performance qualities equal or superior to hardwood, necessary for high traffic environments.









**MAD 4 YOU RESTAURANT, BEECHWOOD, OH**

**Edipo in Scarlet Red and Pansia Green,  
Cleopatra in Steel Green and Mahogany**

*Rose Corrick Interiors*

The six distinct patterns of the cork tree are of the most exquisite natural materials available. The MP765™ water-base urethane gives cork a deep, vibrant and rich look.





## ONTARIO ART GALLERY

*Architect: Frank O. Gehry & Partners*

Special Duro-Design cork flooring tiles are designed for settings where maximum sound absorption is essential. In specific projects like museums and libraries extra thick 5/16" x 12" x 24" tiles are used for optimal acoustics and comfort.





**ONTARIO ART GALLERY**

*Architect: Frank O. Gehry & Partners*

Beautiful, high traffic resistant  
natural Marmol & Granite tiles

A superior hi-tech Duro-design extra resistant water-base urethane  
guarantees lasting beauty and durability









RZ AND CO. BEAUTY SALON, MADISON, WI

Cleopatra Negra in Mahogany and Marble  
White with Cleopatra Powder Blue.

*Zing Design*





**HARD ROCK VAULT, ORLANDO, FL**

Edipo Panama Yellow, Cleopatra Walnut,  
Red Terracotta, Mahogany and Marble Green  
*My Design Inc.*

High density cork, if covered with four coats of our MP765™ water-base urethane and annually refinished, will withstand traffic exceeding 5,000 people per day, which is much higher than typical retail or commercial traffic and beyond comparison to normal residential traffic.









**MANDARA SPA, ATLANTIS RESORT  
PARADISE ISLAND, NASSAU BAHAMAS**

**Marmol in Whisky Brown**

***Lori Rapport Interiors***

**Duro-design premium cork is the natural,  
relaxing and comfortable flooring for spas**





MANDARA SPA, ATLANTIS RESORT,  
PARADISE ISLAND, NASSAU BAHAMAS

Marmol in Whisky Brown

*Lori Rapport Interiors*

Duro-design cork flooring has the innate ability to resist water,  
oils and soap thanks to its unique MP765™ water-base urethane







## 28 Commercial Flooring



PACIFIC SUNWEAR,  
WILLOW GROVE, PA

Cleopatra Cocoa



Ultra comfy

29







Duro-design flooring can be used to great practical and aesthetic effect in diverse environments, including retail stores, restaurants, offices, hotel rooms and lobbies, clinics, resorts, universities, public buildings, houses of worship, and more.





VINTAGE'S WINE AND SPIRITS,  
COLORADO SPRINGS, CO

Cleopatra Negra, Charcoal

◀ REGUS CYBERCAFE, NORTH CAROLINA

Barriga Red Terracotta and Sunny Yellow  
Gensler Archs. Washington D.C.







**MARSHAL ERDMAN AND  
ASSOCIATES, MADISON, WI**

**Barriga Natural and Leather Brown**

**Cork flooring is amazingly durable and  
complements real designer's furniture.**











VANDERBILT UNIVERSITY, OWEN  
GRADUATE SCHOOL OF MANAGEMENT,  
NASHVILLE, TN

Barriga Natural with Moka stripes  
*Everton Oglesby Askew Architects*



Great for high traffic

35



INDIANAPOLIS ART MUSEUM,  
PUCK'S CAFE, INDIANAPOLIS, IN  
Edipo in Natural and Mahogany  
with Marmol Whiskey Brown Border





**EVANSVILLE CENTRAL LIBRARY,  
EVANSVILLE, IN**

**Barriga Natural and Black  
Veazey, Parrott, Durkins,  
Shoulders, Architects**







**Natural cushioning:** Our treated cork retains its natural buoyancy, making it comfortable to walk on and thus exceptionally easy on the legs and feet. It's also great to create attractive design.



## 38 Commercial Flooring



**UNIVERSITY OF TEXAS  
GEOLOGY LIBRARY, AUSTIN, TX**

**Cleopatra Natural with inlays of  
Marmol Burgundy and Infinity Blue**

***O'Connel Robertson and  
Associates Architects***





KRESS LIBRARY, DEPERE, WI ▶

Baltico Natural











◀ MT. VERNON METHODIST CHURCH,  
MT. VERNON, NY

Barriga Bronze

*Walter Sedovic Architects*

BETH AM TEMPLE, BUFFALO GROVE, IL

Marmol in Natural, Whiskey Brown and Cognac

*Nevin Hedlund Architect*

The traditional Marmol pattern in earth tones  
has the beautiful look of granite





**WESTERN MICHIGAN UNIVERSITY  
MEDICAL BUILDING,  
KALAMAZOO, MI**

**Barriga Natural, Moka,  
Red Terracotta and Primavera  
*Integrated Architecture***







**Low maintenance:** Materials like linoleum and vinyl need constant upkeep. By contrast, and due to our special water-base urethane coating, our floors need only minimal maintenance, which makes them a cost-effective alternative for a great many applications.







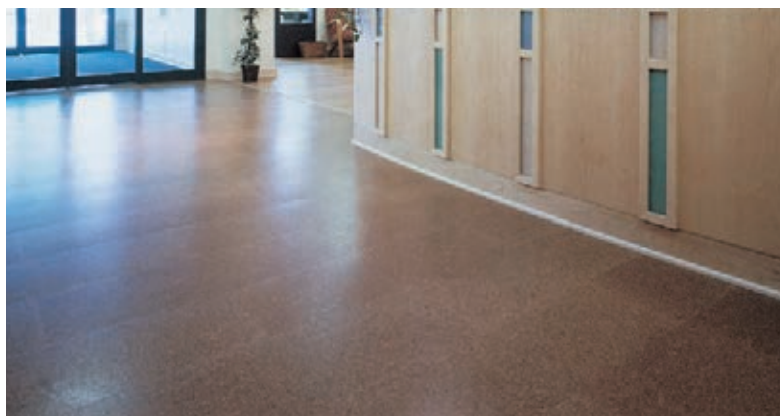


**DENTAL CLINIC, MADISON, WI**

**Barriga Natural and Red Terracotta**

The anti-microbial floor  
for operating rooms,  
labs and white rooms





**ASTRA ZENECA HEADQUARTERS,  
DAYCARE WILMINGTON, DE**

**Marmol Natural planks**

***CUH2A Architects***

**ANHEUSER-BUSCH,  
CORPORATE OFFICE, MIDWAY, FL ▶**

**Edipo Natural**







54 colors to choose from



Bleach



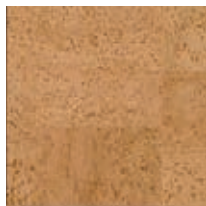
Marble White



Oyster



Natural



Off-White



Maple



Sunny Yellow



Dijon



Cara Yellow



Mustard Yellow



Panama Yellow



Malt



Orange



August Brown



Cognac



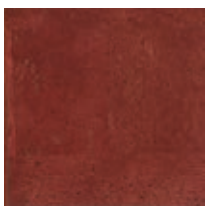
Scarlet Red



Mahogany



Red Maple



Orange Mahogany



Burgundy



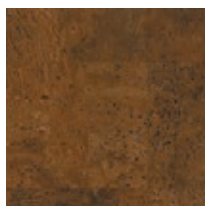
Chestnut



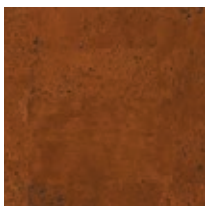
Algerian Red



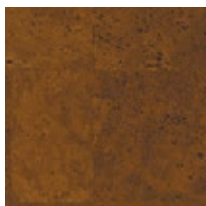
Rioja



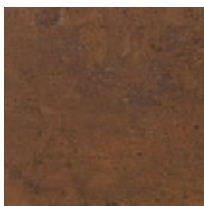
Walnut



Cherry



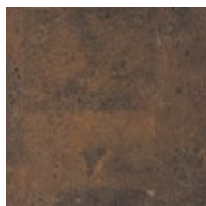
Light Oak



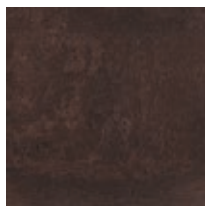
Pecan



Dark Oak



Cocoa



Moka



Greige



Marble Green



Panasia Green



Emerald Green



Aqua



Primavera



## ...and six patterns



Pearl



Pastis



Soft White



Bronze



Praline



Leather  
Brown



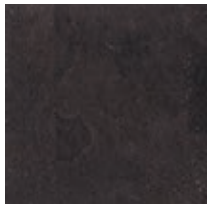
Cointreau



Red Terracotta



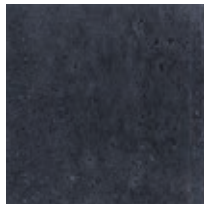
Armagnac



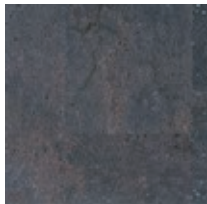
Coffee



Granite



Black



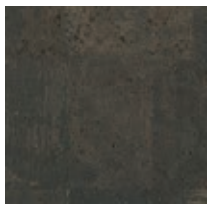
Cobalt



Whisky Brown



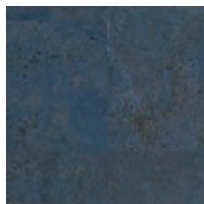
Steel Green



Azure



Charcoal



Infinity Blue

## Six patterns

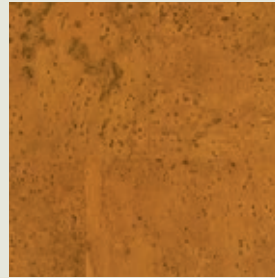
49



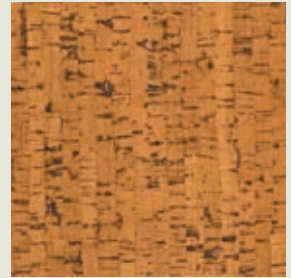
CLEOPATRA



MARMOL



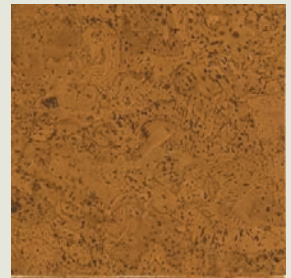
BALTICO



EDIPO



CLEOPATRA NEGRA



BARRIGA

TO SPEAK TO ONE OF OUR AGENTS  
AND/OR TO ORDER FREE SAMPLES  
SAMPLES SHOWING  
SIX PATTERNS IN NATURAL  
& 54 COLORS,

PLEASE CALL US AT: **1 888 528-8518** OR EMAIL US AT:  
[info@durodesign.com](mailto:info@durodesign.com)  
[www.durodesign.com](http://www.durodesign.com)

All colors are compatible with any pattern.  
Custom staining available.



## For Installation

*Installing a Duro-design cork floor can be accomplished in five easy steps :*

1



1. Ensure that wood or concrete sub-floor is free of imperfections, using Portland self-levelling cement to make any necessary repairs.

2



2. Apply water-base contact adhesive with short-nap paint roller. Wait 45 minutes for the adhesive to dry. The dry adhesive will reactivate the pre-glued tiles.

3



3. Lay down the tiles as tightly as possible, compressing them together if necessary so as not to leave any gaps. The tiles are easily cut with a utility knife.

4



4. After installing a few tiles, apply pressure to the joints with a small melamine roller. Alternatively, wait until the end and go over the entire area with a 100-pound roller.

5



5. Apply four coats (two-hour interval between coats) of our MP765™ water-base urethane using synthetic lambskin wool supplied.

*Properly installed and coated with our advanced water-base urethane, a floor made with high density tiles from the Duro-design Cork Flooring Collection is superior in terms of durability and performance to traditional hardwood and linoleum.*

We can also provide on-site supervision to assure a perfect installation. Detailed installation instructions can be found on our Web site at :  
[www.durodesign.com/products/installation](http://www.durodesign.com/products/installation)



## Technical specifications

**Glue down method:** 12"x 12" or 12"x 24"x 3/16"  
tile thickness (5/16" on special demand)

**Floating floor method:** 12"x 36"x 1/2" with 1/8"  
wear layer

**Six patterns available**  
**Density of 500 kg/m<sup>3</sup>**

**Thermal insulation** (conductivity coefficient), for densities  
of 450 kg/2 = 0.958 kcal/m<sup>2</sup> ho C; for densities of 600  
kg/2 = 0.1285 kcal/m<sup>2</sup> ho C

### Humidity Resistance

Under exposure to constant humidity and alternating  
exposure to humidity and heat, tiles neither swell  
nor come unglued

**Compression & recovery** ( ISO 9727 ) with loading of  
7 kg/cm<sup>2</sup>, initial 10%, residual ( after 1 hour ) 1.5%;  
breaking tension on traction, not less than 2 kg/cm

### Dimensional tolerance

Length-width = -0.5, thickness = /0.2 squaring; deviation  
not greater than 0.2mm (0.256»)

**Fire rating** (ASTM E648): Class II

**Smoke density** (ASTM E-662), Flaming 103,  
Non-flaming 109

**Slip resistance** (ASTM C-1028): Dry .7048, Wet .7293

**Abrasion resistance** (ASTM D-3884) : 700 wear cycles

**Acoustical insulation and impact noise resistance;**  
FSTC 53 & FIIC 67 on 8-inch concrete slab as per ASTM  
regulations.

## MP765™ WATER-BASE URETHANE TOPCOAT

Color: clear

Characteristics: odorless and non-yellowing

Reducer: water 10-15% maximum

Viscosity: 20 ± 2» F4

Weight Solids: 35.7%

Weight per gallon: 10.4lb/Gal

Thickness: 3-5 mls

Application: water-base applicator

Apply over: wood, cork

Gloss: 35° sheen (also available in higher & lower glosses)

Catalyst : C-100, 2%

Drying requirements : 1-2 hours between each coat

Other details : 24 hours to walk on

## Maintenance & revarnishing

### Maintenance

Duro-design cork floors are best cleaned by vacuuming, sweeping and using light wood cleaners;  
oils and waxes are to be avoided. Clean regularly with water and mop; you can periodically use  
wood-floor cleaners for prefinished hardwood floors diluted in water.

Floor should be checked for wear and tear every year; whole floor or certain areas can be revarnished  
as required (typically this should be done yearly in retail environments, every two to three years in  
commercial environments, and every five to seven years in residential environments).

### Revarnishing

To re-varnish, manually sand the floor with a #220 grit sand- paper, and apply two coats of the  
MP765™ water-base urethane. For more info go to: [www.durodesign.com/products/maintenance](http://www.durodesign.com/products/maintenance)

## Warranty

*Every Duro-design floor is guaranteed to perform for a full five (5) years and withstand normal  
wear and tear provided two coats of MP765 is applied 1) yearly for high-volume traffic retail;  
2) every two to three years for low-to-medium commercial traffic; or 3) every five to seven years  
for residential traffic. A well maintained floor will last for decades.*





# Cork Flooring



3229 Autoroute Laval (A-440) Ouest, Laval QC Canada H7P 5P2

Tel.: **450.978.3403** Toll Free: **1.888.528.8518**

Fax: 450.978.2542 [info@durodesign.com](mailto:info@durodesign.com)

[www.durodesign.com](http://www.durodesign.com)

